

Water District 1 Report – June 24th, 2026

Water right priorities have continued to hover around the 1900 level. Total diversions have remained relatively constant, while natural flow supply has receded only slowly. Most unregulated streamflows have been steadily receding; however, the Teton River has continued to flow at a healthy rate, not far below its peak.

A priority split has occurred on the Henry's Fork of the Snake River at St. Anthony. Diversions on the Henry's Fork upstream from this point, along with diversions on the Fall River, are diverting all available natural flow, causing the priority split. Hydrologic data suggests that we are also close to a priority split on the Snake River at Blackfoot. Weather forecasts, however, are calling for cool and wet conditions this weekend, which may help buoy priorities. Canal managers are encouraged to track the projected priorities posted daily at waterdistrict1.com.

The projected water right priorities for tomorrow are as follows:

- Fall River: November 5, 1895
- Henry's Fork above St. Anthony: November 5, 1895
- Teton River: October 11, 1900
- Snake River above Blackfoot: October 11, 1900
- Snake River below Blackfoot: October 11, 1900

Storage allocations, approved rentals and leases, and Mitigation Inc. reductions have been programmed into the daily accounting program. Storage remaining values are now populated in the daily accounting report. A summary of storage use and storage remaining is also attached to this report. For detailed information regarding these adjustments, please see the "Storage Rentals and Adjustments" PDF posted on the Current Data page at waterdistrict1.com.

Committee of Nine – Thursday, 6/25 at 10 am at the Pocatello Airport and virtual.

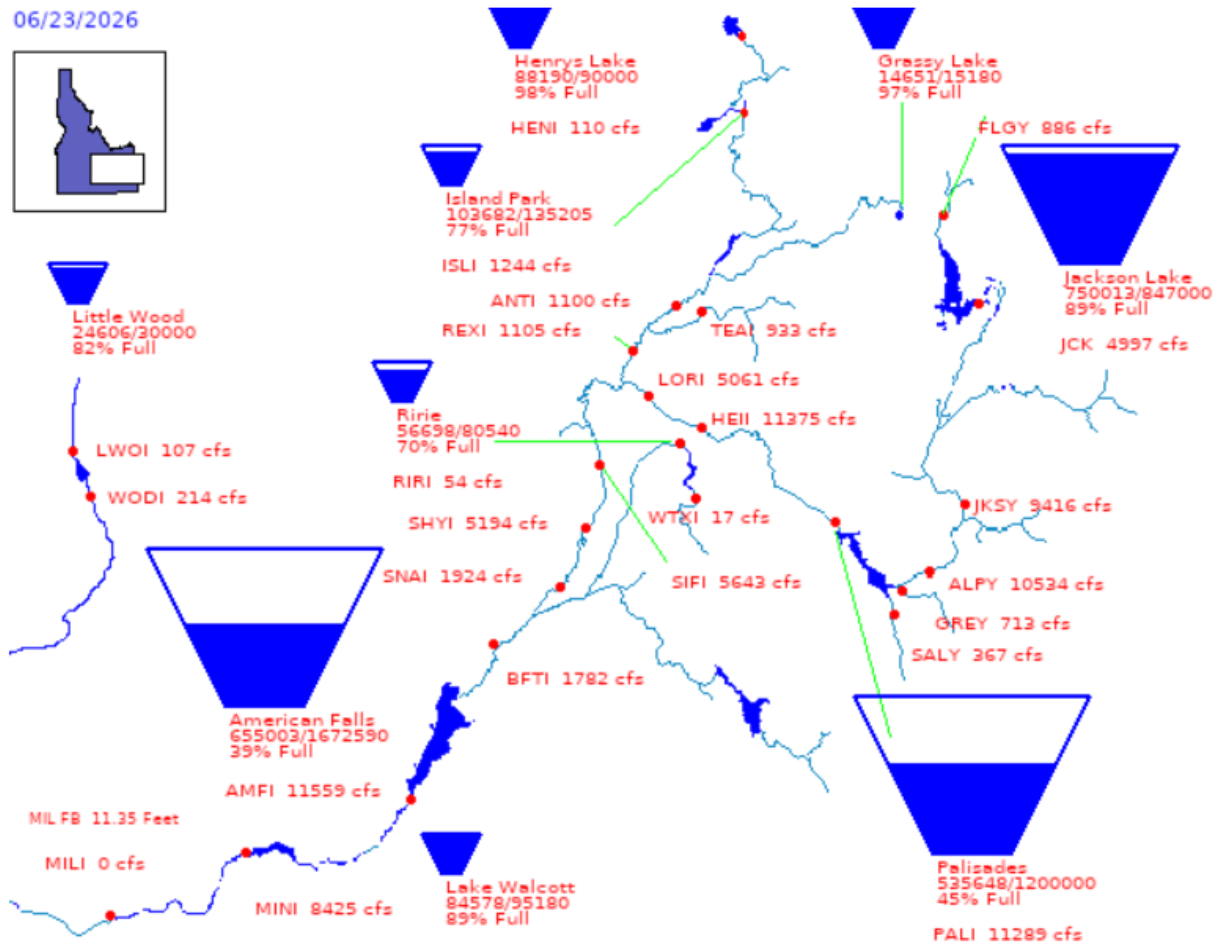
<https://us06web.zoom.us/j/85698683861?pwd=U1QEfH9EWnFQ714g0yyeKxhR1kHuaL.1>

Meeting ID: 856 9868 3861

Passcode: 694955

Bureau of Reclamation, Pacific Northwest Region Major Storage Reservoirs in the Upper Snake River Basin

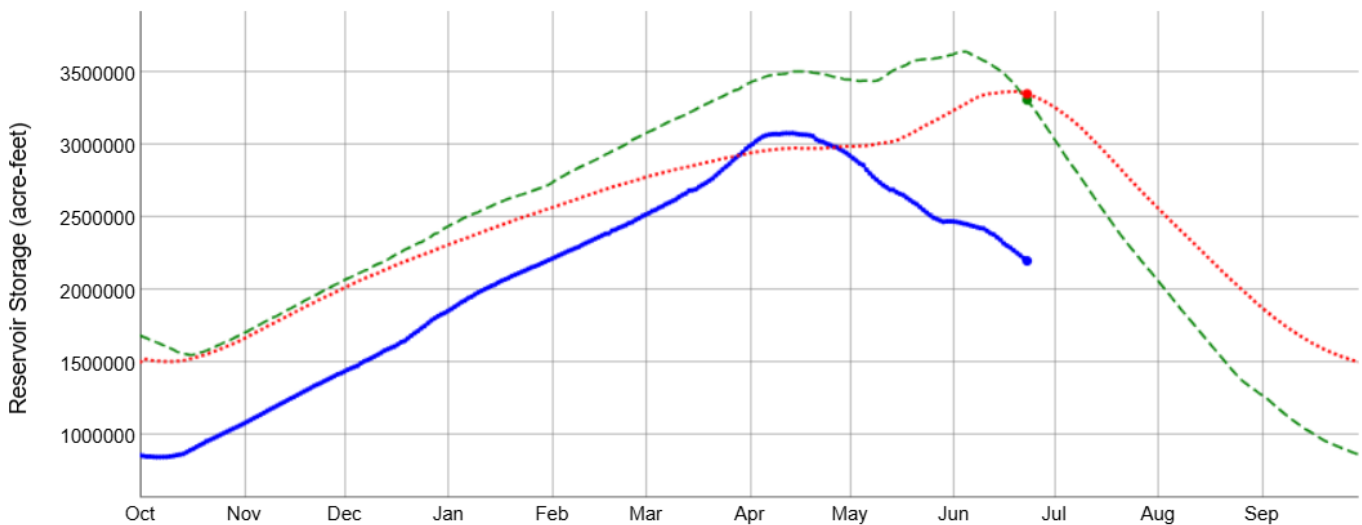
06/23/2026



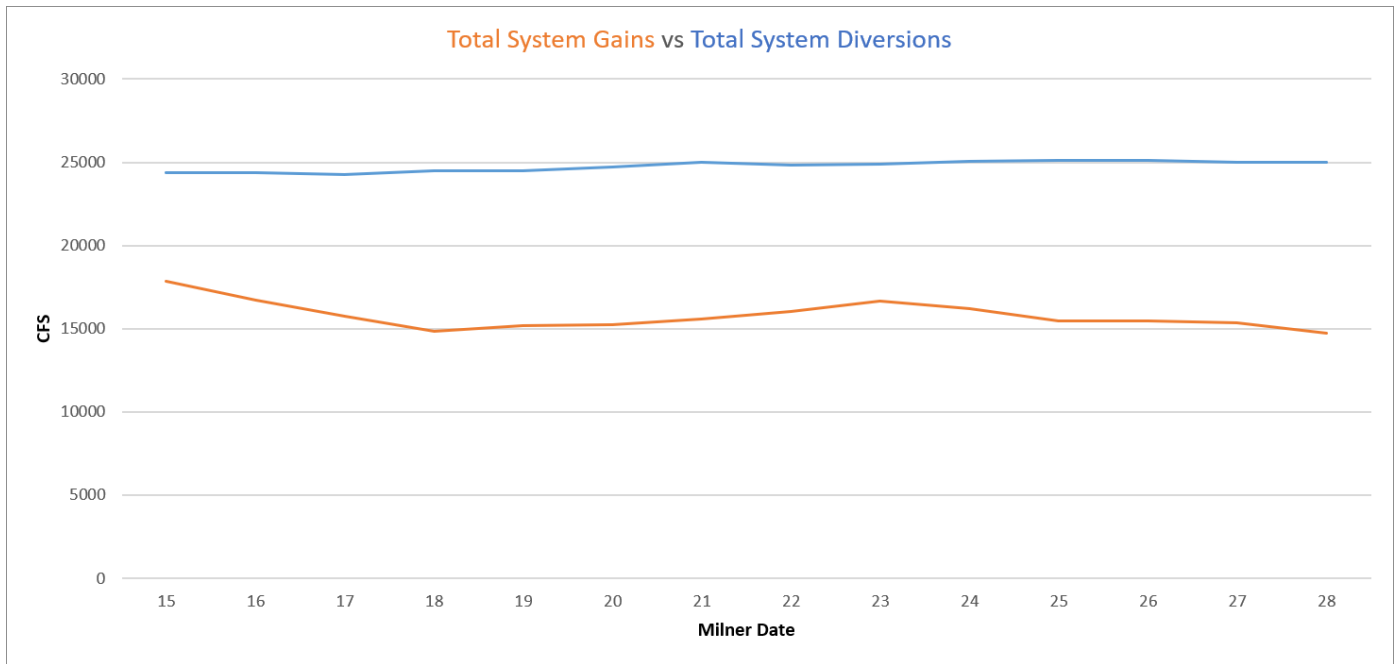
Current Year: 2200273

Previous Year: 3308473

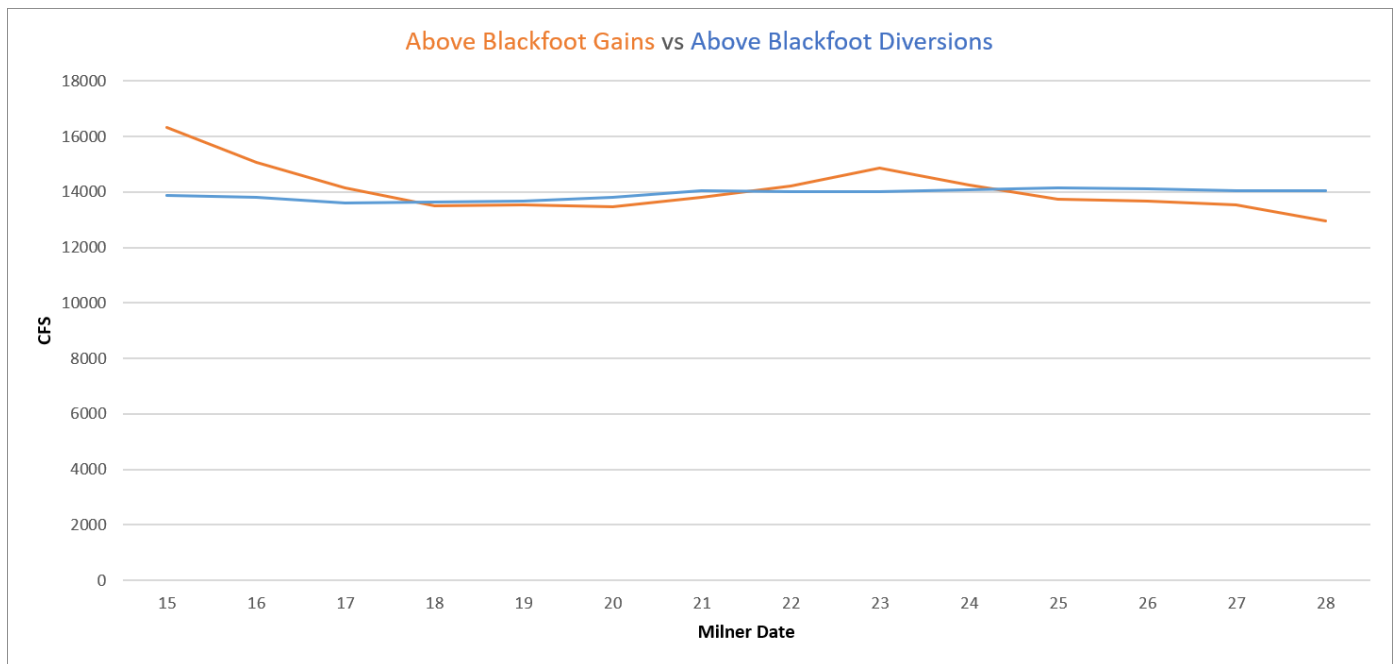
Average: 3349796.58



PROVISIONAL DATA - Subject to change

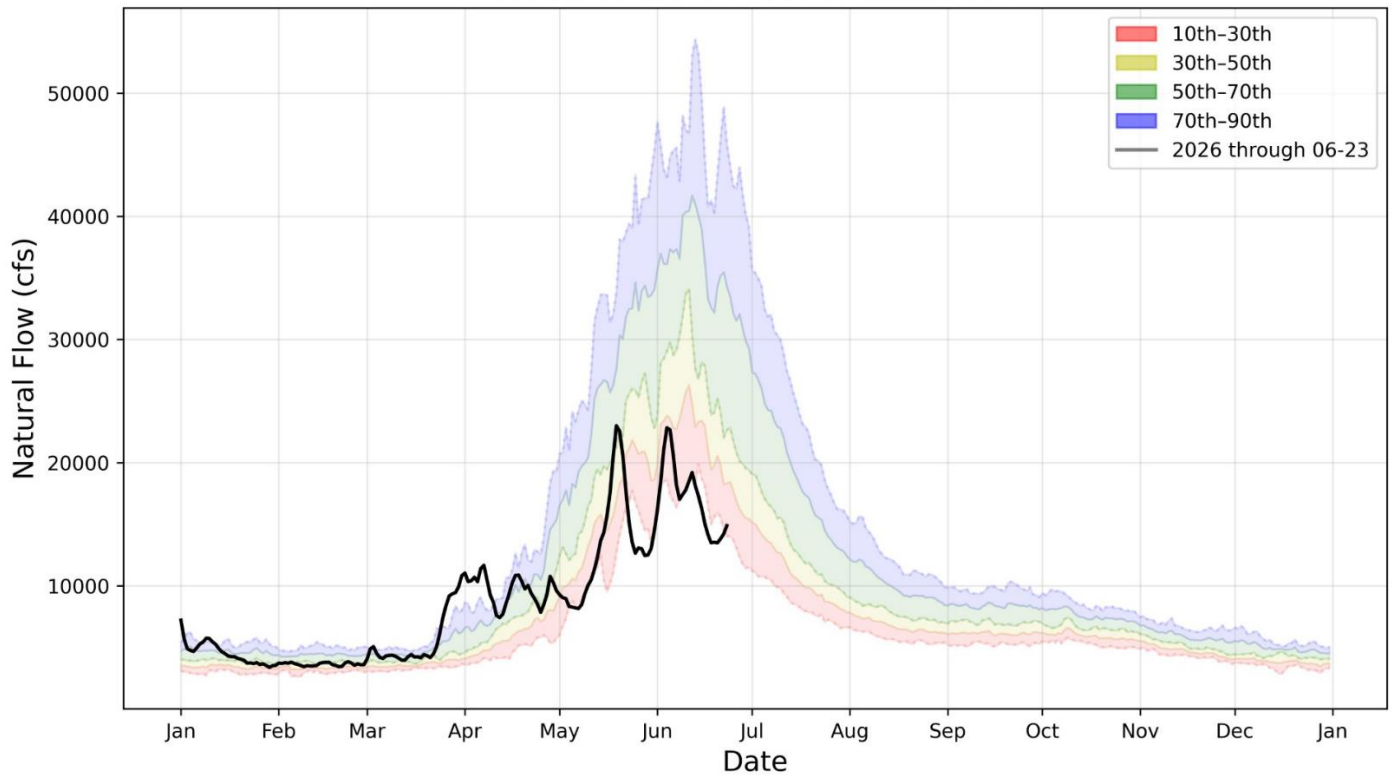


Proxy for reservoir water right accrual

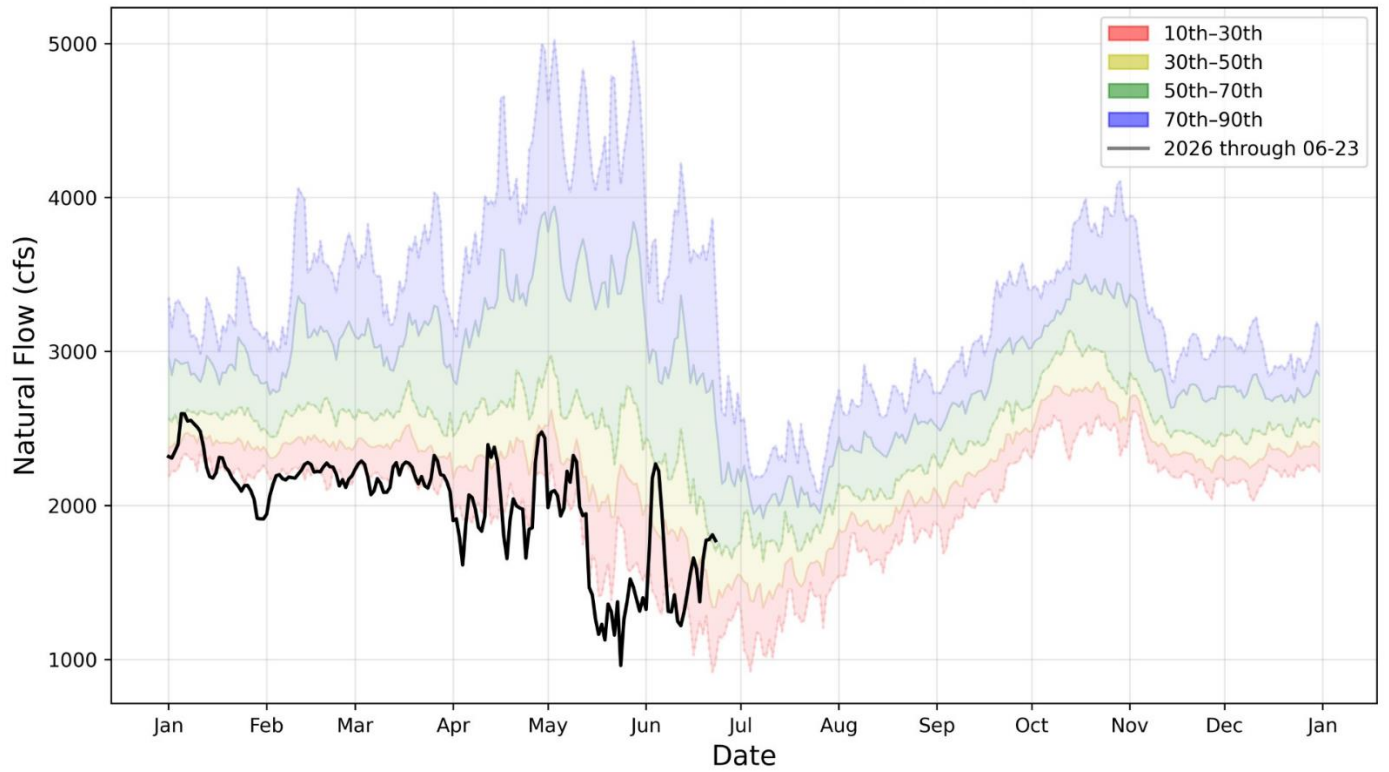


Proxy for 1900 priority split at Blackfoot

Natural Flow Above Blackfoot



Natural Flow Gain Below Blackfoot



WATER DISTRICT 01 - WEEKLY WATER REPORT 06/24/2026

Reach Name	DIVERSION DATA PRIORITY DATES	Projected Priority Dates For Actual Date 06/25/2026
SNAKE ABV LORENZO	3/26/1903	10/11/1900
HENRYS FORK	2/9/1897	11/5/1895
FALLS RIVER	2/9/1897	11/5/1895
TETON RIVER	3/26/1903	10/11/1900
TETON LOWER N. FORK	3/26/1903	10/11/1900
SNAKE ABV BLCKFOOT	3/26/1903	10/11/1900
SNAKE BLW BLCKFOOT	3/26/1903	10/11/1900

Diversion Data

Actual Date	Site	Diversion	CFS DIVN	CFS STOR	AF USED	AF RMNG
Jun 19	13033010	PALISADES CANAL	56	0	80	20
Jun 19	13037505	ANDERSON CANAL (1A)	234	37	7083	23890
Jun 19	13037975	EAGLE ROCK CAN (1) (1B)	642	0	0	0
Jun 19	13037980	FARMERS FRIEND	383	47	2652	5529
Jun 19	13037985	ENTERPRISE CANAL	134	0	3052	11291
Jun 19	13038025	BUTLER ISLAND	44	0	15	206
Jun 19	13038030	ROSS AND RAND	5	0	57	-57
Jun 19	13038055	HARRISON CANAL	469	0	269	24652
Jun 19	13038085	RUDY CANAL	201	62	6204	1619
Jun 19	13038090	LOWDER SLOUGH CANAL	51	0	270	1228
Jun 19	13038098	KITE & NORD CANAL	7	0	166	-166
Jun 19	13038110	BURGESS CANAL * (4A)	784	0	11678	14394
Jun 19	13038115	CLARK & EDWARDS * (5A)	62	0	109	630
Jun 19	13038145	CROFT DITCH	0	0	0	0
Jun 19	13038150	EAST LABELLE CANAL	120	0	0	706
Jun 19	13038180	RIGBY CANAL	187	26	851	2303
Jun 19	13038204	DILTS LATERAL (3) (6B)	0	0	0	0
Jun 19	13038205	DILTS CANAL (6A)	18	0	221	1277
Jun 19	13038210	ISLAND CANAL (30A)	185	0	119	1801
Jun 19	13038225	W. LABELLE & L.I. * (7A)	519	0	730	2875
Jun 19	13038305	PARKS & LEWISVILLE (36A)	349	1	34	2555
Jun 19	13038315	NORTH RIGBY CANAL	50	0	59	466
Jun 19	13038340	WHITE DITCH (4) (7B)	2	0	0	0
Jun 19	13038360	BRAMWELL CANAL (8A)	0	0	0	0
Jun 19	13038362	ELLIS CANAL (5) (30B)	0	0	0	0
Jun 19	13038388	MATTSON-CRAIG CANAL	10	0	58	490
Jun 19	13038392	SUNNYDELL CANAL (29A)	169	0	1470	3137
Jun 19	13038426	LENROOT CANAL	183	47	1053	6873
Jun 19	13038431	REID CANAL	141	0	294	5298
Jun 19	13038434	TEXAS & LIBERTY	219	0	28	4101
Jun 19	13038435	BANNOCK JIM SLOUGH	17	1	40	-40
Jun 19	13038436	HILL PETTINGER	0	0	107	-7
Jun 19	13038437	NELSON COREY CANAL	7	0	0	0
Jun 18	13046310	DEWEY CANAL	22	22	313	-313
Jun 18	13047305	YELLOWSTONE CANAL	30	0	27	-27
Jun 18	13047475	MARYSVILLE CANAL * (9A)	181	0	722	-722
Jun 18	13047575	FARMERS OWN CANAL (11A)	0	0	0	0
Jun 18	13047681	CONANT CK CANAL (12A)	3	3	470	-470
Jun 18	13048475	ENTERPRISE CANAL	101	101	5503	8542
Jun 18	13048560	FALL RIVER CANAL (16A)	129	0	0	0
Jun 18	13048705	CHESTER CANAL	31	0	213	-213
Jun 18	13049010	SILKEY CANAL	16	0	120	-120
Jun 18	13049015	CURR CANAL	38	0	108	-108
Jun 18	13049550	LAST CHANCE CANAL	48	12	688	7791
Jun 18	13049560	CROSSCUT TO TETN	0	0	0	0
Jun 18	13049561	XCUT FALL R (6) (16B)	172	0	0	0
Jun 18	13049705	FARMERS FRIEND	47	5	237	-237
Jun 18	13049710	TWIN GROVES CANAL	76	0	192	-192
Jun 18	13049725	ST ANTHY UNION (17A)	332	0	615	5715
Jun 18	13049805	SALEM UNION CANAL	157	0	1128	12187
Jun 18	13050525	EGIN CANAL	293	0	1	6329
Jun 18	13050530	ST ANTHY UNION (7) (17B)	64	0	0	0
Jun 18	13050535	INDEPENDENT CANAL	107	0	819	19537
Jun 18	13050545	CONSOLIDATED FRMRS	174	0	791	8997
Jun 18	13054515	CANYON CREEK CANAL	0	0	0	0
Jun 18	13055030	WILFORD CANAL	62	0	0	0
Jun 18	13055040	TETON IRRIGATION (18A)	50	0	0	0

FOOTNOTES: (#) STORAGE DIVERSION COMBINED WITH (#A)

TOTAL DIVERSION AND STORAGE USE DOES NOT INCLUDE ADDITIONAL PUMP DIVERSIONS (NOT SHOWN) ADDED AT THE END OF THE YEAR

WATER DISTRICT 01 - WEEKLY WATER REPORT 06/24/2026

Actual Date	Site	Diversion	CFS DIVN	CFS STOR	AF USED	AF RMNG
Jun 18	13055050	PIONEER CANAL	6	0	0	0
Jun 18	13055060	STEWART CANAL	4	0	0	0
Jun 18	13055205	PINCOCK-BYINGTON	17	0	52	-52
Jun 18	13055209	TETON ISL RCHG PIT	0	0	0	0
Jun 18	13055210	TETON ISLND FEEDER (35A)	310	0	0	0
Jun 18	13055245	SALEM UNION B	13	0	5	-5
Jun 18	13055275	ROXANA CANAL	7	0	40	-40
Jun 18	13055280	ISLAND WARD CANAL	2	0	603	-603
Jun 18	13055295	SAUREY CANAL	24	0	161	-161
Jun 18	13055315	WOODMANSEE-JOHNSON (19A)	8	0	0	0
Jun 18	13055323	CITY OF REXBURG (34A)	15	0	0	0
Jun 18	13055334	REXBURG IRRIGATION	140	0	23	-23
Jun 19	13057025	BUTTE & MARKET * (20A)	362	9	23	31078
Jun 19	13057030	BEAR TRAP CANAL	26	0	293	-293
Jun 19	13057125	OSGOOD CANAL	89	0	382	9949
Jun 19	13057126	CLEMENTS CANAL	0	0	22	223
Jun 19	13057130	KENNEDY CANAL	20	0	1	276
Jun 19	13057135	GREAT WESTERN (21A)	323	0	124	66059
Jun 19	13057145	IDAHO CANAL (33A)	910	0	0	73124
Jun 19	13057250	PORTER CANAL (9) (21B)	218	0	0	0
Jun 19	13058125	FERGUSON CANAL	5	0	0	0
Jun 19	13058290	ORVAL AVERY CNL	6	0	0	0
Jun 19	13058310	ROY AVERY CANAL	18	0	0	0
Jun 19	13058370	R COOPER SAND CR	8	0	0	0
Jun 19	13058380	R COOPER WLLW CK	8	0	0	0
Jun 19	13058510	PROGRESSIVE SAND	303	0	0	0
Jun 19	13058514	W & O COOPER	10	0	0	0
Jun 19	13058515	IDAHO FR SAND CK	0	0	0	0
Jun 19	13058530	PROGRESSIVE WILL	88	24	999	-999
Jun 19	13059504	CITY OF IDF PIT	0	0	0	0
Jun 19	13059505	WOODVILLE CANAL (22A)	50	0	495	9825
Jun 19	13059520	WOODVILLE SIPHON (22B)	11	0	0	0
Jun 19	13059525	SNAKE RIVER VLLY * (23A)	428	0	3685	64609
Jun 20	13060500	RESERVATION CANAL	198	0	2165	-2165
Jun 20	13060501	X RESERVATION	260	0	0	0
Jun 20	13061430	BLACKFOOT CANAL	366	0	338	20390
Jun 20	13061520	NEW LAVA SIDE * (24A)	76	0	0	9253
Jun 20	13061525	PEOPLES CANAL * (25A)	294	0	2590	53297
Jun 20	13061610	ABERDEEN CANAL	1171	0	18479	119043
Jun 20	13061650	CORBETT CANAL	108	0	0	8337
Jun 20	13061670	NIELSON-HANSEN	4	0	0	0
Jun 20	13061705	RIVERSIDE CANAL * (26A)	64	0	15	1294
Jun 20	13061995	DANSKIN CANAL	170	0	0	1722
Jun 20	13062050	TREGO CANAL	44	0	0	2978
Jun 20	13062051	JENSEN GROVE	8	0	648	-648
Jun 20	13062503	WEARYRICK CANAL	43	0	5	393
Jun 20	13062506	WATSON CANAL	89	0	11	1678
Jun 20	13062507	PARSONS CANAL	28	0	101	543
Jun 21	13069569	J RANDALL	0	0	0	100
Jun 21	13075800	PORTNEUF RENTAL	0	0	0	0
Jun 21	13075900	FT HALL MICHAUD	178	178	21342	56761
Jun 21	13076400	FALLS IRRIG PUMP	109	109	11783	34554
Jun 22	13080000	MINIDOKA NSIDE * (27A)	1148	1823	161134	121020
Jun 22	13080500	MINIDOKA SSIDE (10) (27B)	988	0	0	202396
Jun 23	13085500	A & B IRRIGATION	288	288	28186	78077
Jun 23	13085800	PA LATRL PUMP (11) (28B)	55	0	0	0
Jun 23	13086000	MILNER IRRIGATION	223	223	20107	51786
Jun 23	13086520	NSIDE XCT GDNG (11) (28E)	757	0	0	0
Jun 23	13086530	RES DIST #2 CANAL	1438	1438	173687	191301
Jun 23	13087000	N SIDE TWIN FALLS (28A)	2545	2957	238363	547882
Jun 23	13087500	TWIN FALLS S SIDE	3115	115	56379	165473

FOOTNOTES: (#) STORAGE DIVERSION COMBINED WITH (#A)
 TOTAL DIVERSION AND STORAGE USE DOES NOT INCLUDE ADDITIONAL PUMP
 DIVERSIONS (NOT SHOWN) ADDED AT THE END OF THE YEAR